

# P2642T

Tilting Low-Profile Mount for Flat-Panels up to 130 lb. /59kg

Color: Black

Weight 15.00 lb. | 6.8 kg

Weight Capacity 130 lb. | 59 kg

Width 22.41 in. | 569 mm

Height 16.50 in. | 419.1 mm

Depth 1.97 in. | 50 mm

Mounting Pattern 200 x 200 (Min) - 525 x 400  
(Max) mm

Display Range 26.00 - 42.00 in

Tilt +10.00°

Downloads at Mounts.com



[Data Sheet](#)



[Bid Specification Document](#)



[Installation Manual](#)



[Dimensional Drawing](#)



[CAD File](#)



[High Resolution Image](#)

## BIM FILES



[Image file](#)



[TXT file](#)



[RFA file](#)



[DGN file](#)



[DWF file](#)



130 lb.



+16.50



+10.00°



2 in



200 x  
200 min.



525 x  
400 max.



26-42 in

## DESCRIPTION

The P2642T is a tilting low-profile mount for flat-panels up to 130 lb. It typically fits displays ranging from 26 - 42 in. or with a mounting pattern of 200 x 200mm to 525 x 400mm. It offers up to 10° of continuous tilt, a low-profile design, post-mounting leveling adjustment system, and built-in lateral shift for optimizing your installation location.

## FEATURES

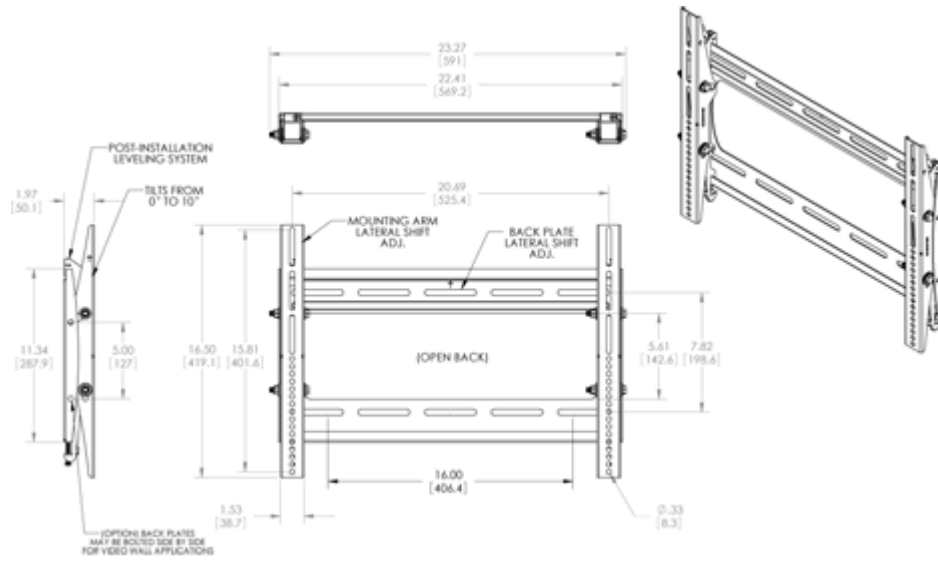
- 10° of continuous downward tilt
- Post-installation leveling system
- Open design for easy cable and electrical access
- Built-in lateral shift
- Mounting kit includes wood, concrete and steel stud attachment hardware



# P2642T

Tilting Low-Profile Mount for Flat-Panels up to 130 lb. /59kg

DOWNLOAD FULL SIZE CAD FILES AND DIMENSIONAL DRAWINGS AT [MOUNTS.COM](http://MOUNTS.COM)



## ACCESSORIES FOR P2642T



### GB-INWAVP

In-wall A/V and Power GearBox™



### SHLF-EQ

Single Equipment Shelf to Attach to P-Series



### SHLF-VC

Video Conference Shelf for P-Series



### SHLF-VE

A/V Shelving System for P-Series Mounts

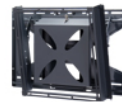
[MORE AT MOUNTS.COM](http://MOUNTS.COM)

## SIMILAR PRODUCTS



### P2642T

Tilting Low-Profile Mount for Flat-Panels up to 130 lb. /59kg



### GB-MS2

Tilting Flat-Panels Mount for Displays up to 175 lb. and Integrated Storage



### CTM-MS1

Tilting Mount for Flat-Panels up to 160 lb./73 kg



### CTM-MS2

Tilting Mount for Flat-Panels up to 175 lb./79 kg



### PCM-MS2

Tilting Flat-Panels Mount for Displays up to 175 lb./79 kg



### PTM

Single stud Tilt and Pivot Mount for Flat-Panel up to 50 lb.

[MORE AT MOUNTS.COM](http://MOUNTS.COM)



World Headquarters | 3130 E. Miraloma Ave, Anaheim CA 92806 | 800.368.9700 USA | F 800.832.4888 | [www.mounts.com](http://www.mounts.com)  
Europe Office | Unit 3, The Moorings Business Park, Channel Way | Longford, Coventry, CV6 6RH, UK | +44 (0) 2476 644105 | F +44 (0) 2476 64416  
© 2012 PREMIER MOUNTS | Rev.01 | 10.2011